

A project by



SRI VENKATESHWARA
CONSTRUCTIONS



LIVE ELATED, IT'S THE ONE FOR YOU!

Gated Community Villas and
3 BHK Apartment at KOMPALLY

LIVING
SPACES

The wonder of life



WEST-FACING VILLA
Plot Size: 238 Syd.

Ground Floor	First Floor	Second Floor	Total
1230 Sft.	1380 Sft.	750 Sft.	3,360 Sft.



Ground Floor Plan



First Floor Plan



Second Floor Plan



Ground Floor Plan



First Floor Plan



Second Floor Plan



EAST-FACING VILLA
Plot Size: 299 Syd.

Ground Floor	First Floor	Second Floor	Total
1600 Sft.	1600 Sft.	850 Sft.	4,050 Sft.





VIEW FOR NORTH SIDE

EAST-FACING VILLA
Plot Size: 346 Syd.

Ground Floor	First Floor	Second Floor	Total
1830 Sft.	1830 Sft.	940 Sft.	4,600 Sft.



Ground Floor Plan



First Floor Plan



Second Floor Plan



APARTMENT BLOCK TYPICAL FLOOR PLAN

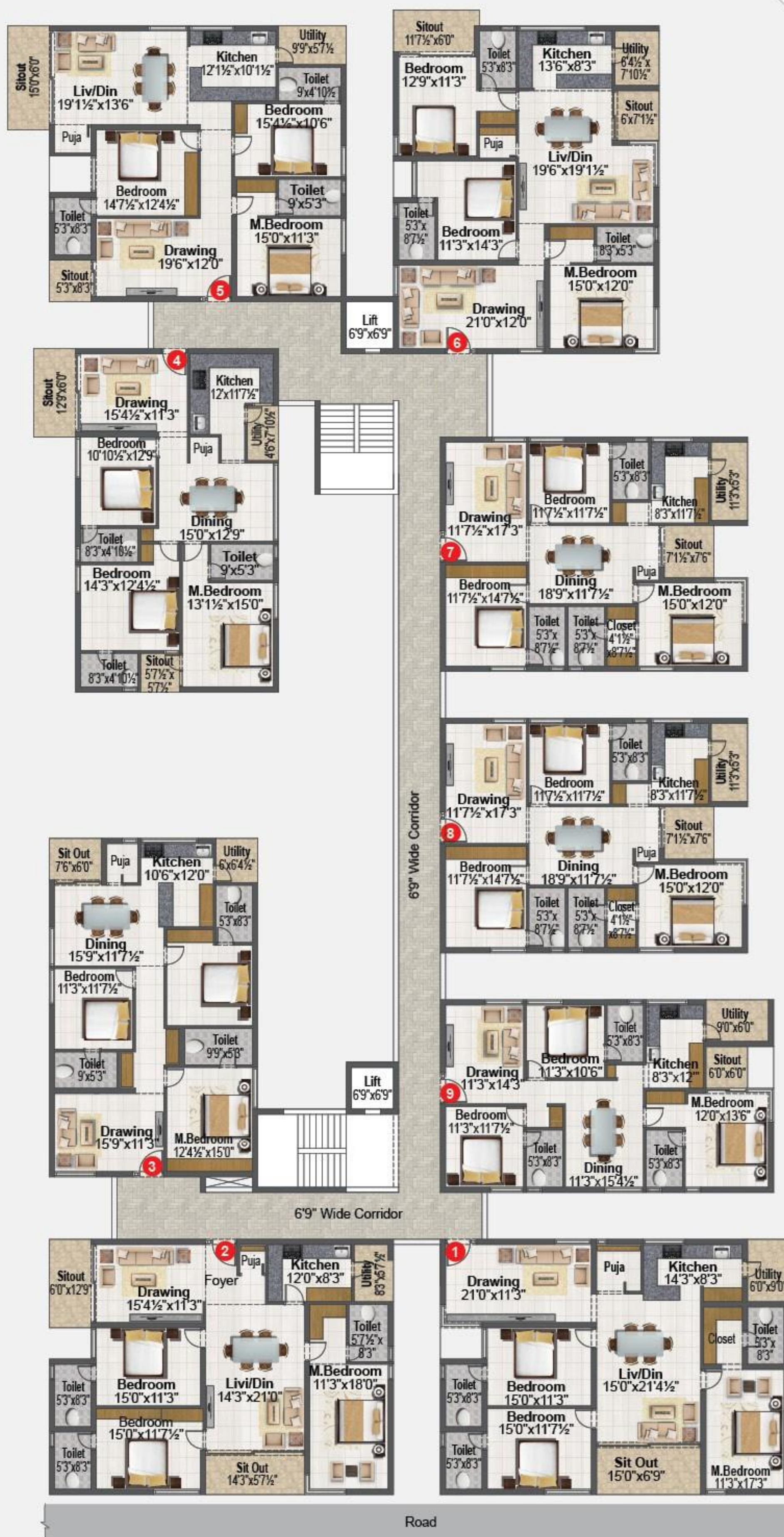


You wished
FOR A QUIET LIFE,
WELCOME aboard

Living Spaces by Sri Venkateshwara Constructions is a community of both Villas and Apartment, created to fulfill the expectations and lifestyle needs of everyone. It's a community where there's a home for every dream and desire, every passion and pocket, every living and lifestyle. With 47 elegantly-designed villas and a 5-floor apartment with nine 3BHK flats on each floor, here comes a residence accompanied by everything for contemporary living. And if that's what you are looking forward to, we can help you find your kind of home at this wonderful, quiet address.

Area Statement

Flat No.	plinth area	common area	Salable area
1	1921.65	378.35	2300
2	1846.45	363.55	2210
3	1495.55	294.45	1790
4	1545.68	304.32	1850
5	1796.32	353.68	2150
6	1863.17	366.83	2230
7	1462.12	287.88	1750
8	1462.12	287.88	1750
9	1336.80	263.20	1600





CLUBHOUSE AMENITIES

- A/C Gymnasium
- A/C Guest Rooms
- Yoga and Meditation
- Multipurpose Hall
- Terrace Swimming Pool

OTHER AMENITIES

- Children's Play Area
- Tennis Court
- Half Basketball
- Lift (only for Apartment)



You deserve a
LIFESTYLE, we've
put **MANY IDEAS**

We've designed Living Spaces to be a **Villa and Apartment** community that can be a complete living and lifestyle environment in itself. That's because we would want to give you hardly any reason to step out, barring the need to fulfill essential requirements. So, this place features spaces for play, spaces for relaxation, spaces for bonding, spaces to rejuvenate, all of which together make **Living Spaces**.

MASTER PLAN



STRUCTURE

RCC-framed structure to withstand seismic loads.

SUPERSTRUCTURE

9" thick for external walls and 4½" for internal walls of lightweight clay bricks/AAC blocks of superior quality.

PLASTERING

Internal: Double-coat cement plaster of 12 mm thickness with smooth finishing.

External: Double-coat sand-faced cement plastering of 20 mm thickness.

PAINTING

Internal: Two coats of good quality emulsion paint over two coats of putty finished surface.

External: Putty/Texture finish and weather-proof emulsion paints based on finalized elevation.

FRENCH DOORS

UPVC sliding door double-glazed unit of KINBON or equivalent.

WINDOWS

UPVC windows of double-glazed unit of KINBON or equivalent and fly-proof.

GRILLS (For Apartment only)

Aesthetically designed MS grills with enamel paint finish.

KITCHEN

Granite platform with stainless steel sink with both treated water (soft) and bore-well water connection and provision for RO system.

WASH AREA

Provision for washing machine/drier, wet area for washing utensils etc.

COMMUNICATION

Intercom facility for all units connecting security and neighbourhood. Provision for cable connection in living room and all bedrooms. Provision for internet connection in living and master bedroom.

LIFTS (For Apartment only)

High-speed manual/automatic elevators with V3F for energy efficiency with granite cladding.

WTP AND STP

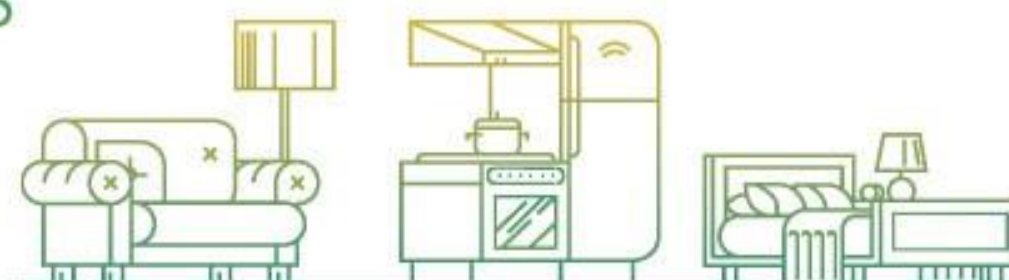
Fully treated water made available through exclusive water-softening and purification plant with water meters for each villa unit. A sewage treatment plant of adequate capacity as per norms will be provided inside the project. Part of the treated water will be used for landscaping.

LIVING SPACES

The wonder of life



SPECIFICATIONS



FLOORING

Living, Dining and Kitchen: 800x800 mm size double-charged vitrified tiles of reputed brand.

All Bedrooms: 600x600 mm sized double-charged vitrified tiles.

Bathrooms: Acid-resistant anti-skid ceramic tiles of 300x300 mm size of reputed brand.

Staircase: Granite flooring.

Balconies: Vitrified tiles of reputed brand.

Corridors: Marble/granite flooring.

DADOING

Kitchen: Glazed ceramic tiles dado up to 2 ft height.

Bathrooms: Glazed tiles dado up to 7 ft height (doorframe height).

DOORS

Main Door: 7ft height teak wood frame with flush/teak wood shutter of melamine matt, polish fixed with designer hardware of reputed make.

Internal Doors: 7ft height teak wood frame with flush doors of lamination fixed on both sides.

BATHROOMS

Premium quality washbasins of reputed brand Cera/Hindware or equivalent.

Premium quality wall-mounted EWC of reputed brand Cera/Hindware or equivalent. Premium quality concealed flush tanks of reputed brand Cera/Hindware or equivalent. Premium quality CP fittings of reputed brand, Jaquar or equivalent. Diverters will be provided in all bathrooms for shower and wall mixture will be provided for common bathroom.

ELECTRICAL

11 KV feeders to ensure quality power. Concealed copper wiring in PVC conduits. Power outlets for air-conditioners in all bedrooms and living areas. Power plugs for cooking range, chimney, refrigerator, microwave, mixer grinder in kitchen. 100% power back-up power except all power plugs. Three-phase supply for each unit and individual meters. Miniature Circuit Breakers (MCBs) of MDS or equivalent. All electrical modular switches and sockets of Havells or equivalent make.

CAR PARKING

Each apartment will have two car parking slots.

SECURITY

Solar-powered security fence for total compound. Round-the-clock security guards and surveillance cameras at the main security and at required locations.

CLUBHOUSE AND AMENITIES

Well-designed clubhouse with facilities for indoor games like caroms, table tennis etc. Gym, yoga room, senior citizen's lounge, library, multipurpose hall, guest rooms, swimming pool and changing rooms.

RAINWATER DISPOSAL

Rainwater from terrace and open areas will be collected through rainwater pipes which will be discharged into rainwater harvesting pits to recharge underground water levels.

