

# Upgrade to a better life

A PREMIUM GATED COMMUNITY @ KOMPALLY

VISTARA'S   
**DELIGHT**  
HEIGHTS

RERA NO. P02200002790

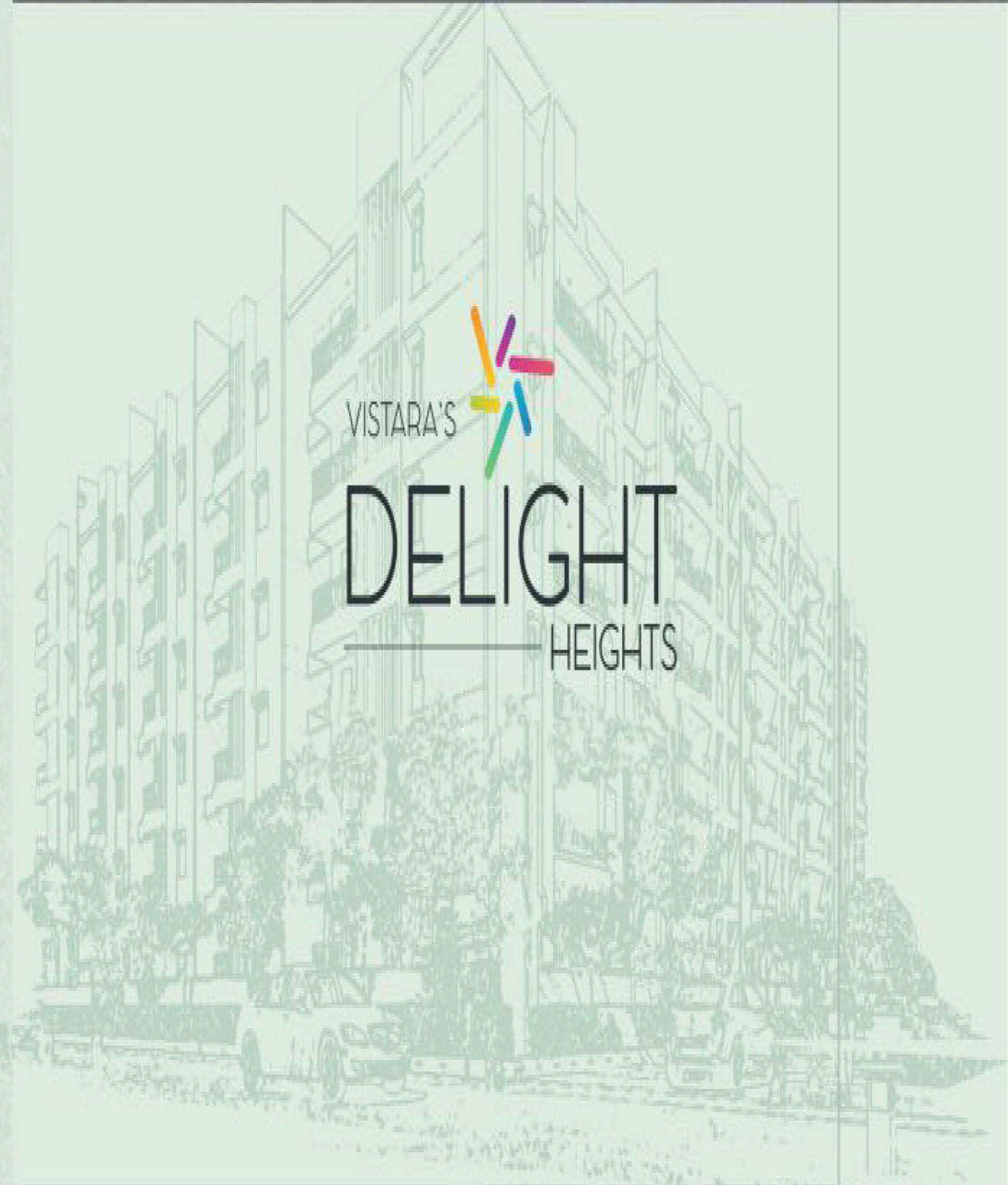


## Seek the elevated lifestyle

EXPERIENCE THE BEST LIFESTYLE



Upgrade to a better life. Indulge your love for beauty.  
Come home to an aura of luxury you richly deserve.  
Soaring high in a premium locality, yet leaving the  
crowded bustle of urban living behind,  
**Vistara's Delight Heights** will pamper Soaring high in  
a premium locality; reserved for those who believe life  
must be lived to the fullest. In this haven of style and comfort,  
you will find that rare factor that best defines luxury:







## Project Features

- Located in Kompally
- 100 Units
- Grand Entrance with Security Post
- 2 & 3 BHK Units
- 1240sft. to 1865sft.
- 24hrs Water Facility
- Power Backup for 10 Points for 3BHK & 8 Points for 2BHK
- 24 hrs Security
- CC Camera Surveillance
- Vaastu Compliant Design
- Water Softener for Used Water
- Rain Harvesting
- No Common Walls
- Excellent Ventilation
- Gym
- Kids Play Area
- Clubhouse
- Multipurpose Hall

VISTARA'S  
**DELIGHT**  
HEIGHTS

Seek **the finest**-and get it

EXPERIENCE THE BEST DESIGN & ARCHITECTURE



Enjoy the Bliss of perfect living

HOMES WITH WORLD BEST QUALITY FINISHES AND BEST VENTILATION

VISTARA'S  
DELIGHT  
HEIGHTS





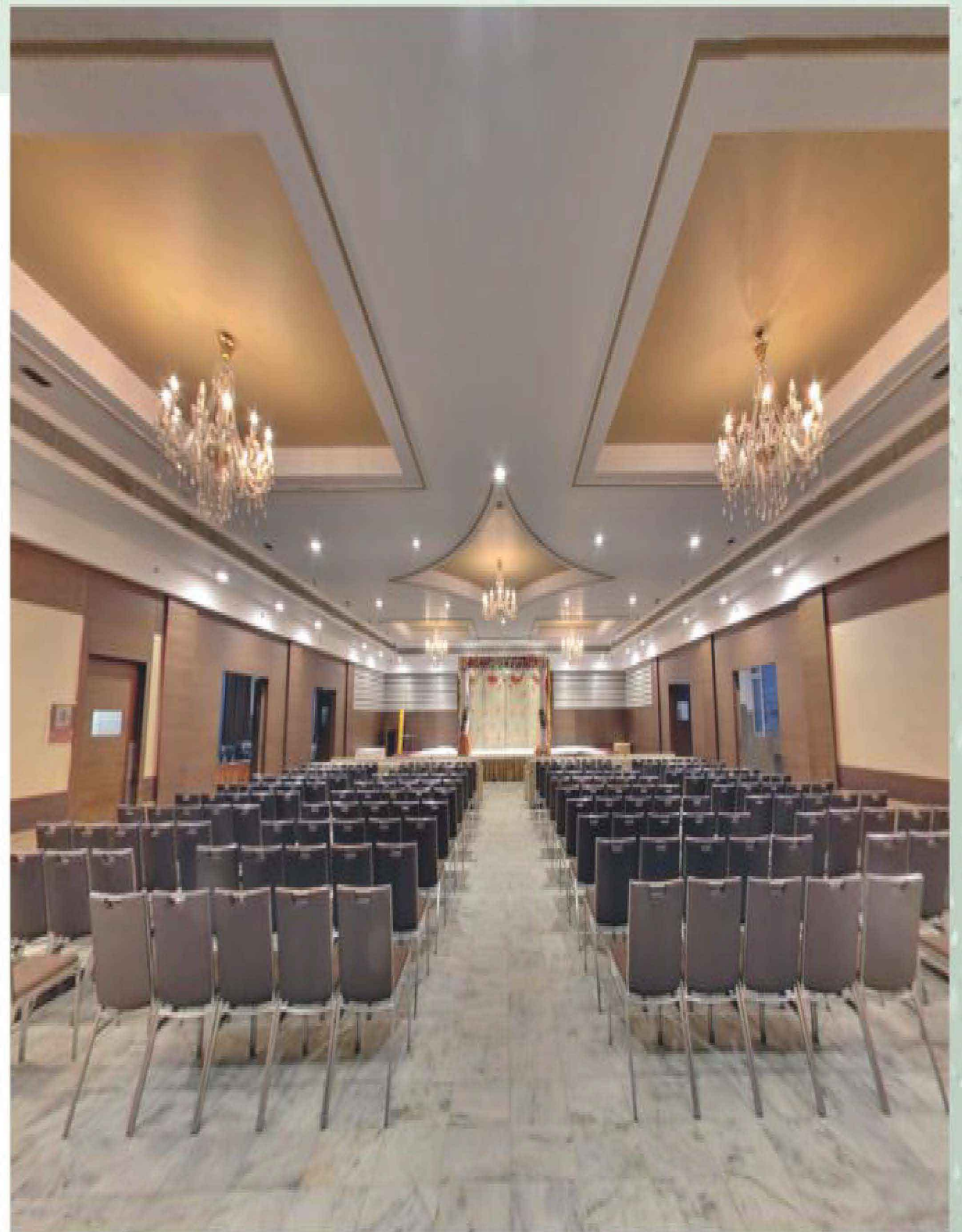
## Play the Luxuries

a-list indoor games to play your friends or family



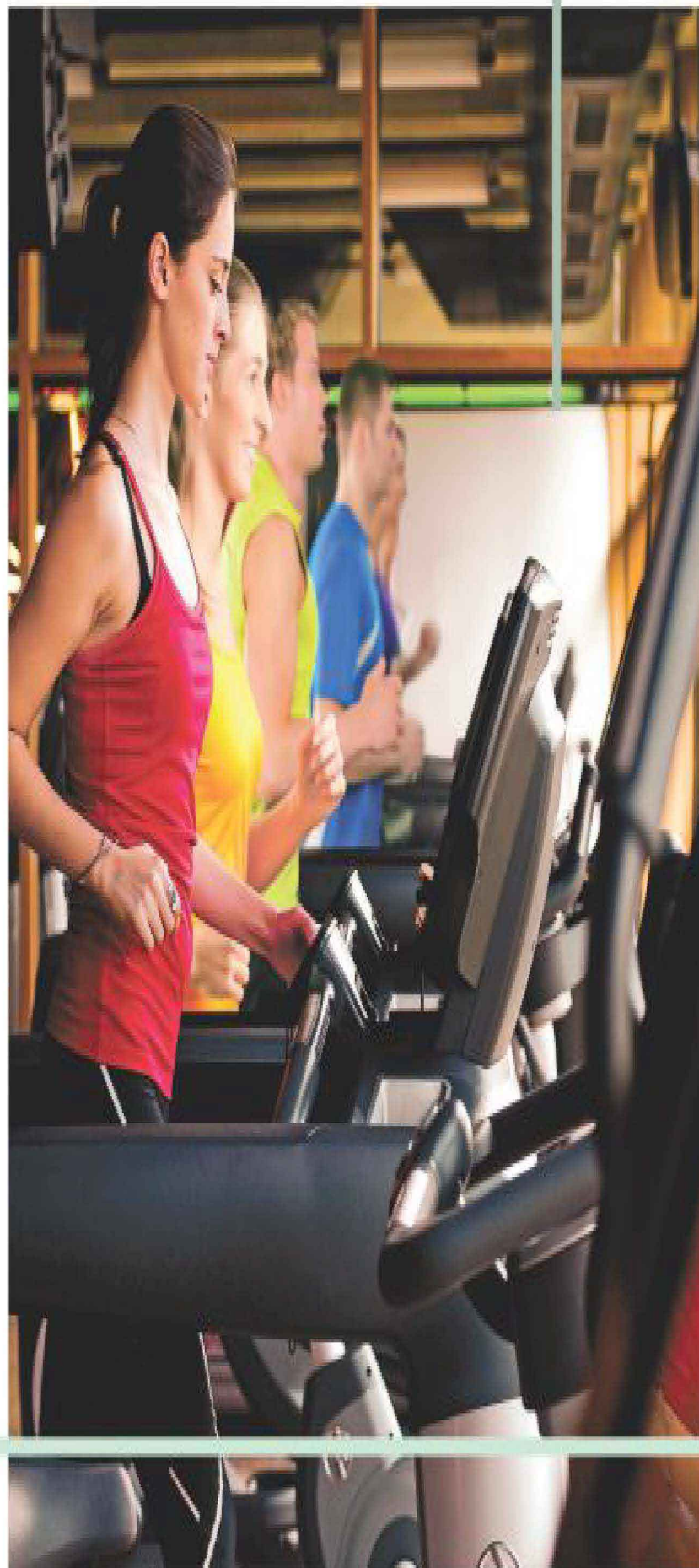
## Host the Celebration

a well luxuriated multipurpose space for events and training space for your kids, like self defense, dance and any other



## Live the fitness

a finest and equipped Gym for your fitness and health

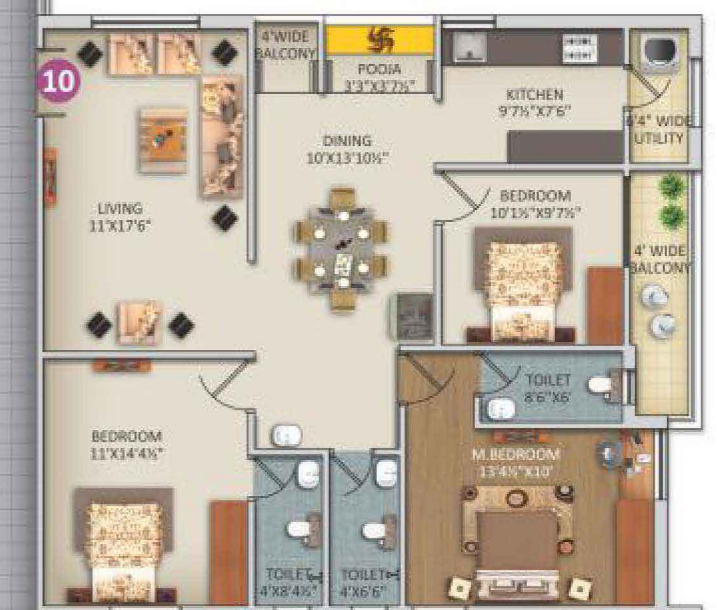


VISTARA'S  
**DELIGHT**  
HEIGHTS



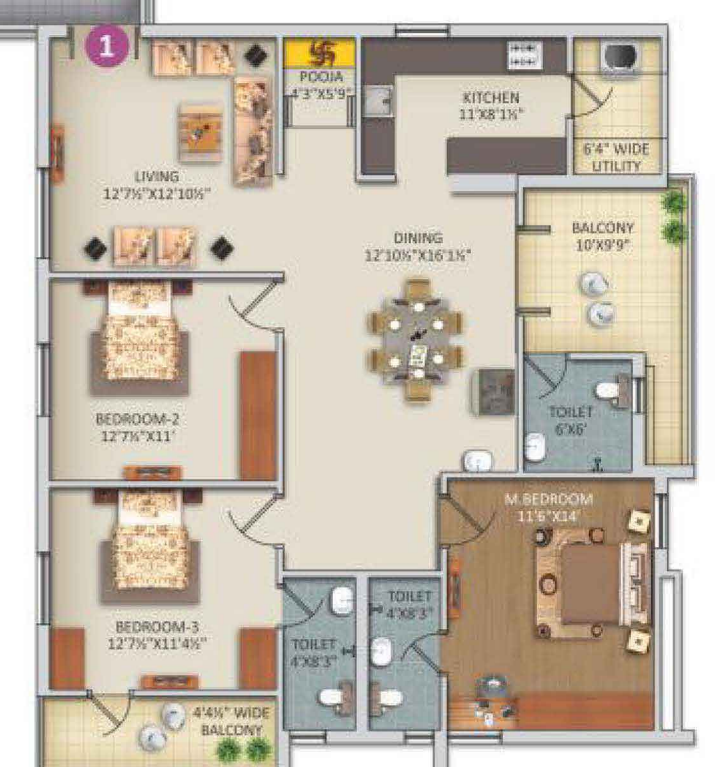


## Typical Floor Plan



Flat No.	Carpet	Balcony, Utility	Common Area	SBUP
1	1233	237	395	1865
2,3,4	860	124	256	1240
5	1199	156	385	1740
6	1217	126	352	1700
7	949	64	252	1265
8	1039	84	272	1400
9,10,11	1114	115	321	1550

Flat No.	Carpet	Balcony, Utility	Common Area	SBUP
12	992	125	278	1400
13	916	95	254	1265
14	859	137	259	1255
15	1247	221	382	1850
16	1237	139	395	1770
17	1256	140	399	1800
18	1247	153	406	1805





Surround yourself  
with **elegance**



A TRUE PERFECTIONIST WAS BEHIND  
PLANNING EVERY  
AMENITY YOU SEE AROUND YOU.

VISTARA'S  
**DELIGHT**  
HEIGHTS



VISTARA'S

# DELIGHT HEIGHTS

We use the finest materials and accessories to create that aura of sophistication and style. Here are our specifications.



## FRAME WORK

RCC framed structure.



## FLOORING

- > Vitrified tile flooring with skirting in drawing, living/dining and all bedrooms.
- > Ceramic tiles in toilets, balconies, and utility areas.



## TOILETS / BATHS

- > European WCs and wash basins of Hindware/Parryware or equivalent make.
- > Toilet accessories of Jaquar or equivalent make.



## CABLE TV

Provision for Cable TV in living and all bedrooms.



## COMMON SERVICES FOR THE GATED COMMUNITY

- > Power backup for street lighting, STP, Water supply & lifts.
- > Concealed underground cabling for water, power and communication.



## ENVIRONMENTALLY FRIENDLY PRACTICES

- > Sewage Treatment Plant (STP)
- > Rain water harvesting pits as per design.



## SUPER STRUCTURE

Fly ash/Red brick/ CC block masonry.



## GENERATOR / DG BACKUP

Standby power for lifts and common amenities and light & fan in every room.



## WINDOWS

Aluminum / UPVC windows



## WALL FINISHES

- > All interior walls will have a smooth finish with oil bound distemper paint.
- > All external walls will have a cement based exterior paint.



## COMMUNICATIONS

Telephone, Internet points in living and master bedrooms.



## DOORS

- > Main door in solid wood/ MDF with teak veneer finish or equivalent.
- > Internal doors-flush doors with laminates or equivalent.
- > Chrome/SS plated ironmongery.



## KITCHEN

Granite counter with ceramic tile dado upto 2 ft above the counter and SS sink.



## POWER

- > Concealed copper wiring of Finolex or equivalent make.
- > Power plugs in all necessary areas.
- > Electrical fittings and fixtures of Anchor Roma or equivalent make.



## SECURITY FEATURES

- > 24/7 security
- > Guard house at main entry with telephone communication for each unit.

## SPECIFICATIONS

Quality in details

